

BARTLE 259



~~\$888,000~~ **\$853,000***

GREAT GIVE BACK \$35K SAVING APPLIED

**HOUSE AND LAND PACKAGE
LOT 342 JACKSON CIRCUIT,
EUCALEE ESTATE, GLENEAGLE**

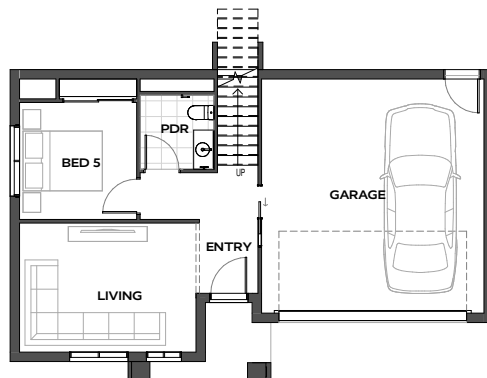
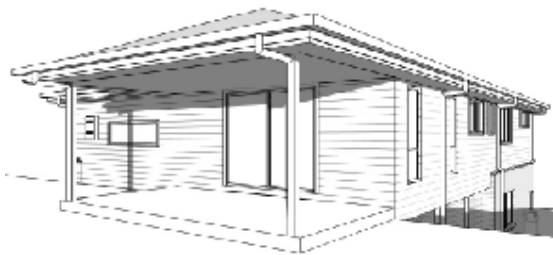


MIN LOT FRONTAGE 13.5m
HOUSE WIDTH 12.38m

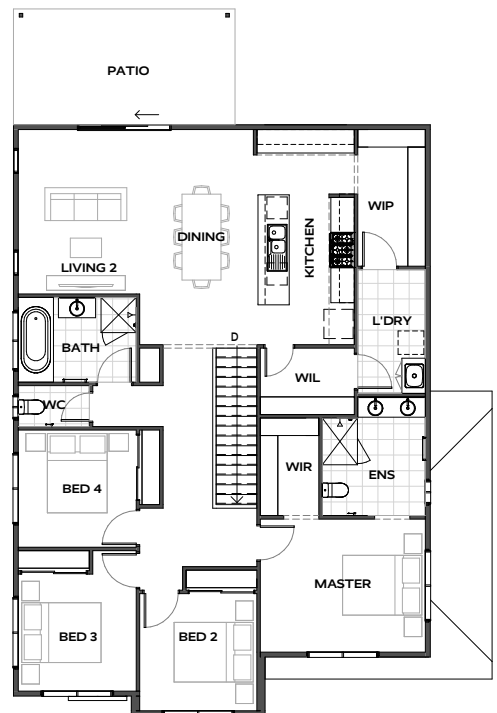
HOUSE LENGTH 18.07m
HOME SIZE 259m²

FEATURED INCLUSIONS

- H Class Site Cost Allowance with 500mm cut & Fill
- Building & Plumbing Applications including water meter
- 90mm Steel Frame & Trusses
- Colorbond Roof, Fascia & Gutter
- Covenant Compliant Façade
- Exposed Aggregate Driveway & Porch
- 2550mm Ceiling Height
- LED Downlights, Ceiling Fans & PowerPoints
- Fisher & Paykel Kitchen Appliances
- 20mm Stone to Kitchen, Ensuite & Bathroom
- Quality flooring – Carpet & Vinyl Plank
- 920mm entry door
- Quality Tapware & Vanities
- Screens & Blinds to Opening Windows
- Daiken split system air to family and master
- Plain Concrete Alfresco Slab (Plan Dependent)
- 3.5kw Smart Solar Power System



LOWER FLOOR



UPPER FLOOR

Villawood The Great Giveback Promotion-Terms and Conditions apply. See <https://villawoodproperties.com.au/community/eucallee/the-great-give-back/> Offer available until the 31st October 2024

Facade picture is for illustration purpose only and may not be reflected in the price. Inclusions not limited to this list. Brand names can be changed at builder discretion. Terms and conditions apply. Arista Homes | QBCC License No: 15061493